



TESTERAL

PRODUCT
OVERVIEW

Company



COMPANY

Testeral company is the largest and most respected manufacturer of aluminium joinery from Serbia. Family owned business with more than 20 years of experience in the industry.

We provide an extensive range of high performance, low maintenance, secure and energy efficient products. Our inspired and skilled workforce is committed to delivering the projects on-time and continually strives for excellence while maintaining our strong family work ethic. Manufacturing plant is equipped with a new CNC machines (Elumatec and Urban) with large production capacity. Testeral is dedicated on creating strong relationships with their customers which gives us the opportunity to constantly improve our products, service and quality. In this way Testeral is able to successfully meet the high requirements of the different markets, which makes us the biggest exporter of aluminium joinery in the territory of Serbia. Currently we are exporting our products to Switzerland, France, Austria, Germany, Belgium, Italy, Sweden, Australia and USA.

Testeral offers wide range of aluminium products:

- Windows and Doors
- Glass Structural Facades (Curtain walls)
- Unitized Curtain Wall and Window wall
- Blinds and Shutters

- Aluminium Railings (glass) systems
- Conservatories (verandas) - Winter Gardens
- Main Entrance Door
- Aluminium and Steel Fire resistant windows, doors and curtain walls
- Aluminium and ceramic claddings (Alubond and Fundermax)

QUALITY POLICY



Long-term goals for the quality policy of the company Testeral are: Fully satisfied customer with our services, Developing cooperation, establishing partnerships with suppliers in order to achieve customer requirements, Motivating employees and constant care of their further professional training in order to improve the quality of the production process, Continuous improvement of the quality management system, Contribution to protecting the environment, health and safety at work.

PARTNERS



Products



ALUMINIUM WINDOWS

Windows make a significant contribution to the style and character of your house. They are not only a decorative element, but also have a decisive influence on your quality of life within your own four walls. Windows affect the entire atmosphere of a room. The value of your house can be also increased through high-quality windows. Windows from Schüco, Elvial, Wicona or Aliplast continue to set international standards for energy-saving, security, convenience and design. The savings potential is enormous. Up to 80 % of energy can be saved as a result of efficient insulation.



ALUMINIUM DOORS

Your entrance door is key to the overall impression your house makes and the focal point of your façade. The right combination of door frame, infill panel and handle is essential to a well-balanced overall impression. This is why Testeral provides a wide range of products all of which will satisfy your requirements in terms of design, fitting, quality and functionality.



GLASS FACADES (CURTAIN WALLS)

Facade glazing - is a modern solution for buildings to stand out against the background of other city buildings, it gives a solidity and unique appearance. Glass facade allows designers and architects to realize a unique concepts, forms, and to surprise with variety of approaches of buildings design. Façades are the central unit in the planning and design of building envelopes. Testeral offers a variety of systems, which allow even the most innovative façade concepts to be realized supremely well architecturally: from window façades with a perfect appearance to impressive structural glazing and high-tech synergy façades.



ALUMINIUM RAILINGS (GLASS) SYSTEMS

Testeral can offer aluminium fences and balconies with a wide variety of designs, optimum system compatibility, individual design options and a high level of weather resistance. They are suitable for new buildings and existing residences. The balcony not only increases comfort in your home, it also raises the value of your property. Aluminium fencing should be strong, durable and well designed.

Products



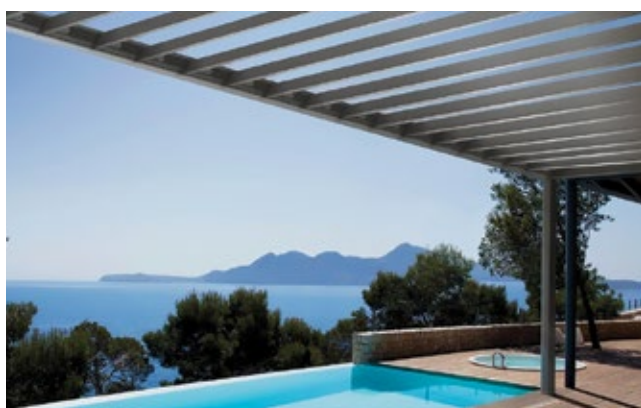
BLINDS AND SHUTTERS

Shutters are ideal for use in domestic and residential properties, and equally suitable for commercial buildings and offices. Aesthetically pleasing and of lightweight construction, they also offer insulation against noise, cold and heat. Whether you select the manual operation system - simple to use and lightweight for ease of action, or our electrically operated models which can be controlled via a wall mounted switch or key fob, we're sure that we have the right shutter for you.



CONSERVATORIES (VERANDAS) - WINTER GARDENS

Absolute living comfort for a feeling of well-being every season. There are many reasons to build a conservatory. Practical reasons, because people simply need more space. Emotional reasons, because people would like to live closer to nature. Or aesthetic reasons, because an elegant extension adds a certain air to a home. From a financial perspective, a conservatory is also an investment that pays off. A high quality conservatory increases the value of a home. And a conservatory is also an intelligent buffer zone which helps you to save energy in both summer and winter.



PERGOLA

Pergola gives you the opportunity to your outdoor space protect from the sun, rain and wind. It can be adapted to any architectural concept and satisfy all needs. Innovative shading system of unique design, with rotating louvers for shading outdoor and semi-open spaces, which offers both natural ventilation and protection from rain with the corresponding adjustment of the louvers. Aluminium pergolas are made from high quality materials.



STEEL WINDOWS AND DOORS

Thanks to its highly resistant material characteristics, steel is perfect for highly frequented buildings such as schools, hospitals, sportscentres and at all public buildings. Stainless steel adds a graceful look and reduces maintenance to a minimum. Janisol stainless steel is therefore the right choice for shopping malls, railway stations, banks and hotels.



ALUMINIUM AND CERAMIC CLADDINGS

Apart from the aesthetic point of view, there are a number of functional reasons what Alubond can provide for every home and building. It has both interior and exterior applications as a building material. It is commonly used as an exterior facade that forms the outer skin of a building. The application of the product is largely dependent on the architect design of the structure. Alubond is a good thermal insulator which can reduce the cost of heating in winter and cooling in summer.



FIRE PROOF WINDOWS AND DOORS

Aluminium fire resistant windows and doors range is available in classifications of EW 30, EI 30(minutes) and EI 60(minutes) in a wide range of inward and outward opening types, with a wide range of door locks to meet every kind of locking demand, including motorized hardware.





FIXED & OPERABLE WINDOWS | PRODUCT SOLUTIONS



FIXED & OPERABLE WINDOWS provide endless possibilities through an array of design options, a variety of opening types and inward and outward configurations. Windows are available in a modern functional profile and an ultra-slim look with superior insulating capabilities which create perfect harmony between durable materials, clean design and architectural challenges. These beautifully designed windows can transform the appearance of any space, making it warmer, brighter and more inviting.








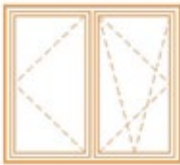





FEATURES / HIGHLIGHTS

- Multiple Frame & Vent Options
- European Inspired Tilt-Turn Operation
- Inward / Outward Opening Configurations
- Classic (Steel Look) Design Variant
- SDL / TDL Multi-Pane Units
- Purity Designer Handles
- Combines w/ Door & Curtain Wall Solutions

**WINDOW & DOOR PRODUCT SOLUTIONS
HARMONIOUSLY WORKING TOGETHER FOR MAXIMUM VISUAL APPEAL**



WINDOW CONFIGURATIONS

					
Picture Fixed	Multi Panel Fixed - TD / SDL Fixed	Trapezoid (Shapes) Fixed	Tilt-Turn Open In	Hopper Open In	Double Tilt-Turn / Casement Open In
					
Single Casement Open Out (Roto-crank)	Single Casement Open Out (Push-out)	French Casement Open Out (Push-out)	Awning Open Out (Roto-crank)	Awning Open Out (Push-out)	

FIXED WINDOWS | PRODUCT SOLUTIONS



SLIMLINE SL 38 CUBIC



SLIMLINE SL 38 CLASSIC



CONCEPT SYSTEM CS 77

Profile Dimensions				System Depth (in.)					Visible Width (in.)		
				Frame	Std. Mullion	Reinf. Mullion	60mm Mullion	100mm Mullion	Frame	DL Mullion	SDL Mullion
Fixed	CS 77	Frame	Functional	2 11/16	2 11/16	7			2 1/2	3 1/21	1 3/16
		Frame	Cubic	3	3		4 1/2	6 1/16	11/2	2	1 3/16
	SL 38	Frame	Classic	3 7/8	3 7/5		5 3/8	7	11/2	2	1 3/16

OPERABLE WINDOWS | PRODUCT SOLUTIONS



SL 38 CUBIC-CUBIC

Mixes a slim look with sleek modern design geometry with common language to the functional profiles featured throughout other systems.



SL 38 CUBIC-FERRO

Adds a flare to typical modern design lines with a vent reveal for a unique look.



SL 38 CLASSIC-CLASSIC

Combines elegance and comfort featuring a classic design with narrow sight-lines for a steel look.

CONCEPT SYSTEM CS 77



CS 77 features a robust functional profile yielding the largest panes of glass matching a variety of different building types with inward and outward openings configurations



Profile Dimensions				Visible Width (in.)									System Depth (in.)	
				Frame-Vent			Vent-Mullion			Vent-Vent			Frame-Vent	Frame
		Vent Size	Small	Medium	Large	Small	Medium	Large	Small	Medium	Large	All	All	
Operable	CS 77 Functional Frame	Vent Standard	4 1/2	5	5 1/2	5 1/2	6	6 1/2	7 1/2	8 9/16	9 9/16	3	2 11/16	
	SL 38 Cubic Frame	Vent Cubic, Ferro, Classic	2 13/16	3 5/8	4	3 3/8	4 1/8	5 1/2	4 3/4	6 1/4	7	3 3/8	3	
	SL 38 Classic Frame	Vent Classic	2 13/16	3 5/8	4	3 3/8	4 1/8	5 1/2	4 3/4	6 1/4	7	4 5/16	3 7/8	

OPERABLE WINDOWS | PRODUCT SOLUTIONS



Performance Specifications			CS 77		SL 38		CS 77		SL 38			
			Fixed		Fixed		Operable		Operable			
Icon	Specification	Glazing	Dbl.	Triple	Dbl.	Triple	Dbl.	Triple	Dbl.	Triple		
			Thermal Insulation (Btu/hr-ft ² -°F)	Fixed	Uw	0.24	0.17	0.23	0.16			
SHGC	0.2				0.15	0.19	0.21					
Open In	Uw								0.24	0.17	0.25	0.19
	SHGC								0.16	0.12	0.2	0.17
Open Out	Uw							0.34	0.27	0.32	0.26	
	SHGC							0.17	0.13	0.16	0.15	
	Acoustic Performance ASTM E90-09/1332			STC	43		44		42		42	
				OITC	34		34		35		35	
	Air Tightness (cfm/ft ²)		0.04		0.01		0.04		0.01			
	AAMA Rating		AW PG120		AW PG100		CW PG 100 (Tilt-Turn) AW PG 100		AW PG100			
	Water Tightness (psf)		12.11		12.11		15		12			

All results based on gateway sizes; vary depending on glass/profile combinations | Above Uw & SHGC values do not necessarily work in combination



Scott DuBose Photography - Copyright 2017

SWING DOORS | PRODUCT SOLUTIONS



SWING DOORS make a lasting first impression that compliments your living space and overall design aesthetic. Engineered modern profiles increase glass sizes to optimize a doors viewing area. Ideal for residential or commercial applications, our swing doors make a statement as an entry door, provide division within interior spaces or offer passage to a balcony, deck or patio. These high insulating products meet the demanding requirements for thermal insulation, stability and security that are on par with the strictest standards.



Architect: FLUX-architecten

FEATURES / HIGHLIGHTS

- Single / Double Panel Doors up to 10 ft. High
- Large Single Panel Pivot Doors
- Optional Concealed Hinges
- Purity & Touch Handles
- Classic (Slim Steel Look) Design Variant
- Seamlessly Combines w/ Window Solutions

WINDOW & DOOR PRODUCT SOLUTIONS HARMONIOUSLY WORKING TOGETHER FOR MAXIMUM VISUAL APPEAL



SWING DOORS | PRODUCT SOLUTIONS



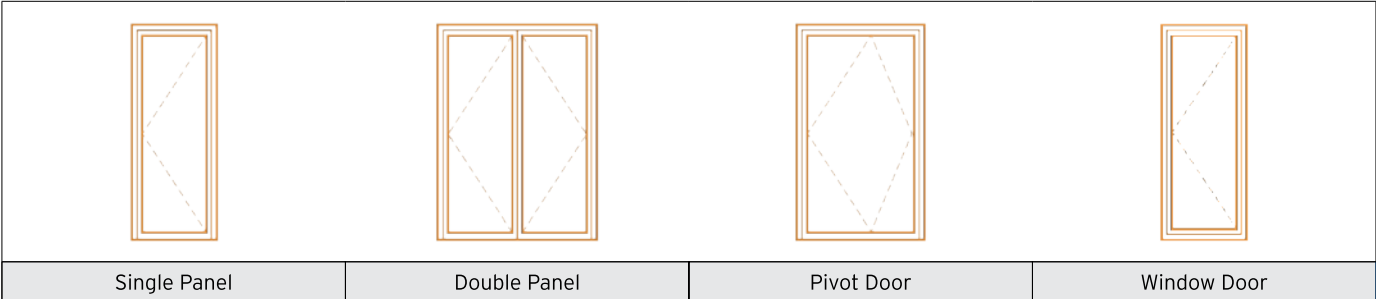
Architect: Mark Van Acker
 Photographer: Debbie De Brauwere

STYLISH PIVOT DOORS. A unique and elegant option yielding wider single door leaves than a traditional single panel door. With a hinge mechanism within the floor and header, these doors utilize a pivot motion to open with a clear opening typically 2/3 of the door leaf. With a flush threshold, these doors are ideal for interior applications or covered entry ways.

COMMANDING DOUBLE DOORS. Our French style double doors have height capabilities up to 10ft high, out pacing the industry standard. These doors help set the stage for a grand entrance or are a great alternative to sliding or folding doors

WINDOW DOORS. These functional solutions utilize window frame and vent profiles paired with side mounting door hardware to provide superior air and water tightness versus a traditional swing door. These are ideal for secondary doors that double as floor to ceiling windows.

OPENING CONFIGURATIONS



CONCEPT SYSTEM CS 77



CS 77 has a robust functional profile yielding the largest panes of glass matching a variety of different building types with a range of solutions for inward and outward opening configurations, including window & pivot doors.

SLIMLINE SL 38 CLASSIC








SL 38 CLASSIC is a perfect harmony between durable material and demanding architectural challenges; this door system, combines elegance and comfort featuring a classic design with narrow sight-lines for a steel look with superior thermal performance.



OPTIONAL CONCEALED HINGES . Every swing door we build is designed to fit your project perfectly. When you have a Reynaers swing door installed into your home, it will operate flawlessly every time you use it. Our **CONCEALED HINGES**, available on CS 77 only, are not only aesthetically remarkable, but are adjustable on all three axis to ensure impeccable operation. The offset design yields a wider clear opening than a door of similar size with barrel or surface mounted hinges.

DESIGNER HARDWARE . PURITY features a timeless, minimal, and sleek design comprised of a material equivalent to 316 stainless steel for maximum durability. TOUCH is a contemporary line of handles with a balance between function and design, available in a powder coat finish to match your profiles. All doors come standard with Multi-Point locks, optional key or thumb turns with interior and/or exterior locking capabilities.

Profile Dimensions				System Depth (in.)	Visible Width (in.)		Height (in.)	Min-Max Sizes (in.)							
					Frame-Vent	Frame-Vent		Double Dr. Vent-Vent	Threshold	Single Panel				Double Panel	
				Min			Max			Min		Max			
				W	H	W	H	W	H	W	H				
Swing Door	CS 77 Functional Frame	Swing	Open In	2 11/16	5 15/16	8 1/4	11/16	24	82	57	120	48	82	100	120
			Open Out												
	Pivot	Open in	2 11/16	6 3/4	N/A	1/2	40	82	72	108	N/A				
		Open Out													
SL 38 Large Classic Frame	Swing	Open In	4 3/4	4 3/8	6 11/16	11/16	24	82	50	100	48	82	100	96	
		Open Out													
Window Door	CS 77 Functional Frame	Swing	Open In	3	5 9/16	8 3/4	2 11/16	24	72	48 57	120 96	48	72	108 96	94 120
			Open Out												

Performance Specifications			Swing Door				Window Door		
			CS 77		SL 38		CS 77		
Icon	Specification	Glazing	Double	Triple	Double	Triple	Double	Triple	
			Thermal Insulation (Btu/hr·ft ² ·°F)	Open In					
	Uw			0.3	0.25	0.3	0.25	0.3	0.24
	SHGC			0.16	0.12	0.19	0.18	0.16	0.12
Open Out									
		Uw	0.35	0.29	0.31	0.26	0.31	0.25	
		SHGC	0.16	0.12	0.16	0.17	0.16	0.12	
	Acoustic Performance ASTM E90-09/1332	STC	39		N/A		40		
		OITC	36		N/A		36		
	Air Tightness (cfm/ft ²)		0.02		0.05		0.3		
	AAMA Rating		R PG15 (Open Out)		CW PG30 (Open In) CW PG40 (Open Out)		CW PG50 (Open In Open Out)		
	Water Tightness (psf)		2.92		11.28		9.4		
All results based on gateway sizes; vary depending on glass/profile combinations Above Uw & SHGC values do not necessarily work in combination									

REYNAERS ALUMINIUM is a symbol of high quality architectural windows and doors.

Reynaers continually leverages the latest world-wide technology to evolve our products into engineering marvels that are aesthetically breathtaking.

THERMALLY BROKEN. Reynaers exclusive state-of-the-art thermally broken technology uses fiberglass reinforced polyamide strips, providing a best-in-class insulating system for top-notch energy performance.

ROBUST CORNER CONNECTIONS. Reynaers superior fit & finish is most evident through the quality of our corner connection. Our corners are joined using corner cleats and keys. Profiles are then crimped with epoxy to tightly secure profiles in place.

ENGINEERED & TESTED. Reynaers products are engineered and tested to handle all types of environmental conditions, incorporating design pressures certified by AAMA (American Architectural Manufacturers Association) for structural performance with exceptional air and water tightness. Testing reports / product simulations are available for various product configurations.

DRY GLAZING. Dry glazing offers easier installation in any weather condition and allows for simple on-site glass replacement without requiring removal of frames or panels. This method provides the ultimate in air & water infiltration performance with gaskets on both sides of the glass.

HIGH PERFORMANCE GLASS. Reynaers products feature Guardian® glazing and Cardinal® glass. These panels include double or triple pane Low-E glass for maximum heat resistance and energy performance. Our systems have been certified by the NFRC with SHGC coefficients and U-values which go above & beyond most local code requirements.

**DESIGNED IN EUROPE,
WELL CRAFTED IN AMERICA**



SLIDING DOORS | PRODUCT SOLUTIONS



SLIDING DOORS are designed to maximize panels sizes, yielding doors with extensive areas of glass for unparalleled panoramic views. Lift-slide opening hardware fulfills a user's high expectations for optimum quality, high insulation and ease of operation. Multiple opening configurations offer flexibility between architectural aesthetics and design including corner & pocket solutions. A featured zero-level, flush, threshold provides for a continuous transition from the interior to exterior with zero grade change.



FEATURES / HIGHLIGHTS

- Mono, 2, 3 & Multi Rail Configurations
- Lift & Slide Technology
- Flat & Zero (Flush) Thresholds
- 90 Degree Corner Profiles
- Pocket Solution
- High Design - Slimline Sliding Door

WINDOW & DOOR PRODUCT SOLUTIONS
HARMONIOUSLY WORKING TOGETHER FOR MAXIMUM VISUAL APPEAL



LIFT & SLIDE DOORS | PRODUCT SOLUTIONS

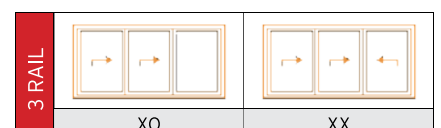
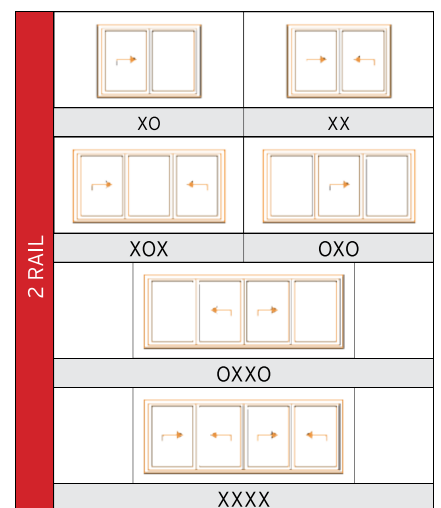
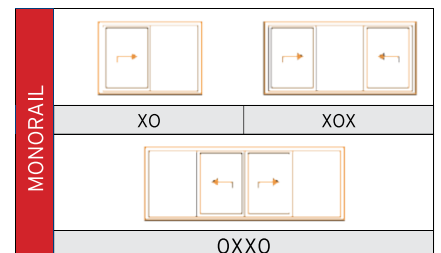


MONORAIL. A Monorail combines a movable vent on one side of the frame with a stationary glazed element anchored directly into the frame on the other, creating a minimalistic look. Utilizing a fixed panel in lieu of fixed vent reduces sight-lines while allowing for the integration of optional inward opening window(s) into the interior side of the frame. However, it is possible to mount the fixed portion on the outside, when glazing the unit from the exterior is desired.



2-RAIL, 3 RAIL & MULTI-RAIL. The outer door frames can be expanded from two (2) to eight (8) rails deep holding up to 16 panels; the combinations are endless, facilitating creative designs for very large openings. Any of the vents can be made into sliding elements, yielding a wide range a door combinations and flexibility for users.

POPULAR CONFIGURATIONS

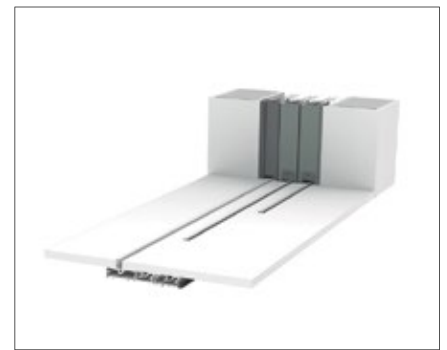
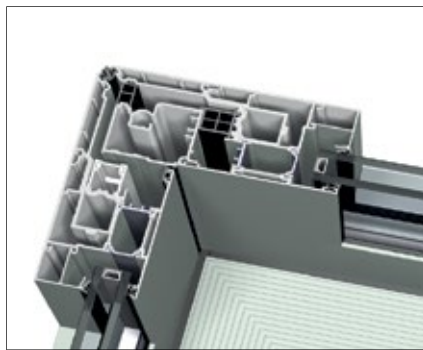
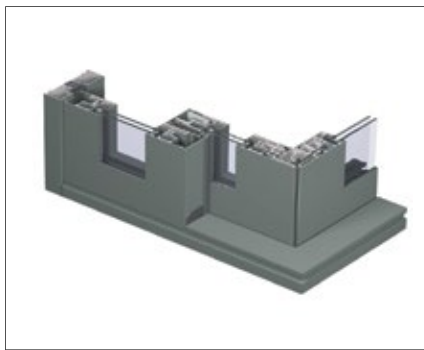


LIFT & SLIDE SYSTEM. A lift & slide system elevates the door panels before gliding them across the track, utilizing durable wheels and stainless steel rails for optimal opening comfort. When closed, the door leaves are anchored for maximum insulation, air & water tightness with a hermetical seal. This methodology eliminates brushes and other moving parts for worry-free maintenance.



CORNER PROFILE. Open your space up to a full spectrum of un-interrupted panoramic views with an optional corner profile that transforms a lift & slide door into a post-less 90 degree opening solution.

POCKET SOLUTION. A solution without borders, allows up to eight vents to slide within a wall. Fully open up a room to the adjacent space beyond the door without any visible elements or obstructions. Achieve superior aesthetics by matching the color of the finishing profile to the supporting wall.



ZERO LEVEL (FLUSH) THRESHOLD. A seamless transition from interior to exterior with zero grade change. The drainage channel is located beneath the floor and the exterior drain tile for water infiltration. It is available for 2, 3 and multi-rail doors.

FLAT THRESHOLD. A slim profile with a sleek design optimal for any space and ideal for renovation projects; available for Two (2) rail doors only.



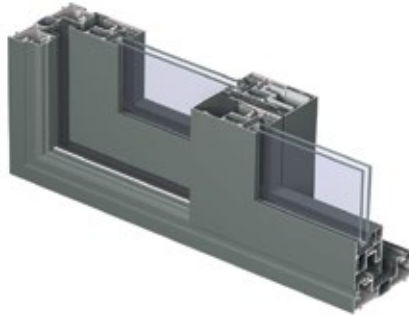
	Zero (Flush) Threshold		Flat Threshold	Standard Threshold	
	Floor Depth	Below Finished Floor		Full Height	Profile Step
CP 130-LS	1 to 1 1/2 (in.)	2 7/8 (in.)	13/16 (in.)	1 7/8 (in.)	1 1/8 (in.)
CP 155-LS	1 to 1 1/2 (in.)	3 3/16 (in.)	13/16 (in.)	2 9/16 (in.)	1 1/4 (in.)

CONCEPT PATIO CP 130-LS



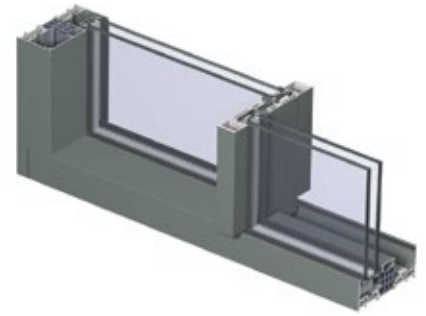
CP 130-LS is a refined lift-slide sliding doors system that is ideal for smaller patio doors up to 8' - 10" tall.

CONCEPT PATIO CP 155-LS



CP 155-LS has a robust functional profile yielding very large door leaves up to 882 lbs.

HI-FINITY SLIDING DOOR



HI-FINITY is characterized by minimal visible sight lines and infinite views.

Performance Specifications			CP 155-LS		CP 130-LS		Hi-Finity	
Icon	Specification	Glazing	Double	Triple	Double	Triple	Double	Triple
		Thermal Insulation (Btu/hr-ft ² -°F)	Uw	0.35	0.28	0.31	0.23	0.30
		SHGC	0.19	0.15	0.20	0.15	0.21	0.20
Acoustic Performance (ASTM E90-09/1332)	STC	40		37		45		
	OITC	35		33		37		
Air Tightness (cfm/ft ²)		0.16		0.16		0.08		
AAMA Rating		LC PG40		LC PG40		CW PG30		
Water Tightness (psf)		6		6		8		

All results based on gateway sizes; vary depending on glass/profile combinations | Above Uw & SHGC values do not necessarily work in combination

Profile Dimensions		System Depth (in.)				Visible Width (in.)			Max Weight	Vent Min-Max Sizes (in.)			
		Frame			Vent	Frame	Frame-Vent	Interlock Vent-Vent	Vent lbs	Min		Max	
		Mono	2-Rail	3-Rail						W	H	W	H
CP 130-LS Functional Frame	Standard	5 1/8	5 1/8	8 1/4	2 5/8	13/8	5 1/4	3 7/8	661	30	33	98	106
CP 155-LS Functional Frame	Standard	6 1/8	6 1/8	9 1/2	3 3/16	115/16	6 3/8	4 1/2	882	32	74	98	120
Hi-Finity 147 Frame	Double Glazed	N/A	5 4/5	9 1/4	13/4	0	1/4	13/8	1200	40	71	90	144
Hi-Finity 179 Frame	Large Dbl. Glazed	N/A	7 1/16	11 1/8	2 3/8				1200	40	71	122	144
Hi-Finity 179 Frame	Triple Glazed	N/A							Custom Solution				

CURTAIN WALLS | PRODUCT SOLUTIONS



CURTAIN WALL offers unlimited design freedom with maximum transparency to meet all the requirements for contemporary architecture. Innovative solutions contribute toward the tendency of large and expansive panes of glass. Window & Door Solutions can be seamlessly integrated into a framed structure. The system features several design and glazing variants, featuring standard pressure plates and structurally clamped options.



FEATURES / HIGHLIGHTS

- Standard 2" Visible Width for All Spans
- Variety of Cap Designs & Sizes
- Structurally Clamped Configuration
- Slim (Steel Look) Frame Option
- Combines w/ All Other Product Solutions

**WINDOW & DOOR PRODUCT SOLUTIONS
HARMONIOUSLY WORKING TOGETHER FOR MAXIMUM VISUAL APPEAL**

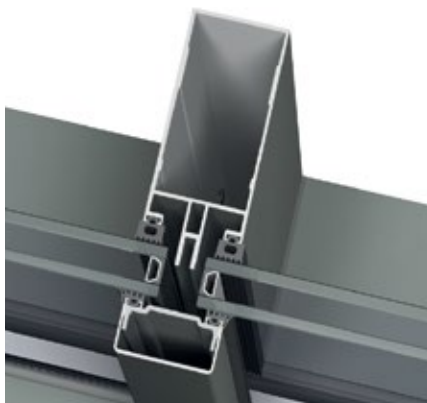


Barclay Home Design | Photographer: Blackstone Edge Studios (Philip Clayton-Thompson)

CURTAIN WALL | PRODUCT SOLUTIONS

EXPANSIVE VIEWS WITH UNLIMITED POSSIBILITIES. Reynaers is a worldwide leader for custom curtain wall solutions. Our products are featured on some of the most complex and well known buildings in the world. Our system design allows for the integration of other Reynaers window and door systems with a variety of concealed connection profiles for superior aesthetics. Designed for large walls of glass, these solutions are ideal for situations where heights exceed 12 ft. versus using a window wall system. In addition, curtain walls can be used to seamlessly combine various window and door systems into a single facade. Regardless of height and span our frame profiles always feature a 2 in. visible width for some of the narrowest sight-lines in the industry.

CONCEPT WALL CW 50



Large Spans / Maximum Flexibility

CW 50 is the standard frame for curtain wall that blends well with any of the various profile designs within our product lines.

CW 50-SL SLIMLINE



Slim / Steel Look

CW 50-SL Slimline features a slim frame to coordinate with other slimline product variants to achieve a steel or classic look.

CW 50-SC STRUCTURAL CLAMPED

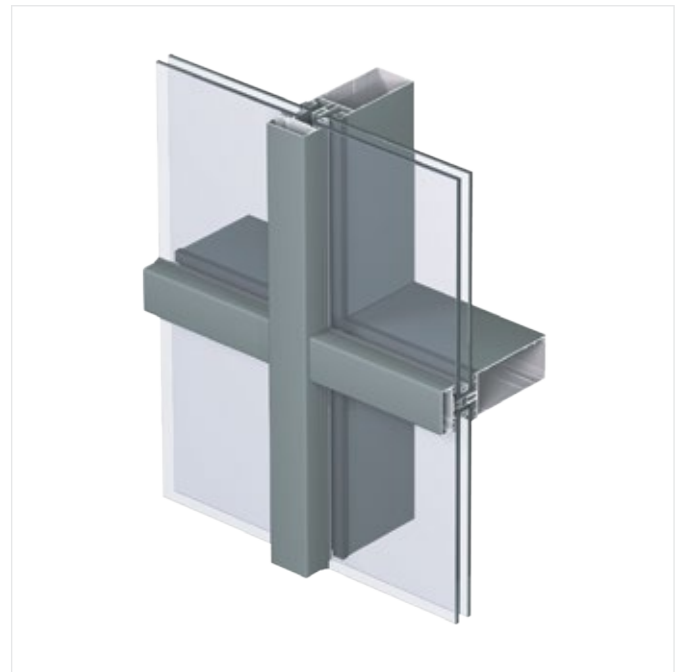


Premium Solution

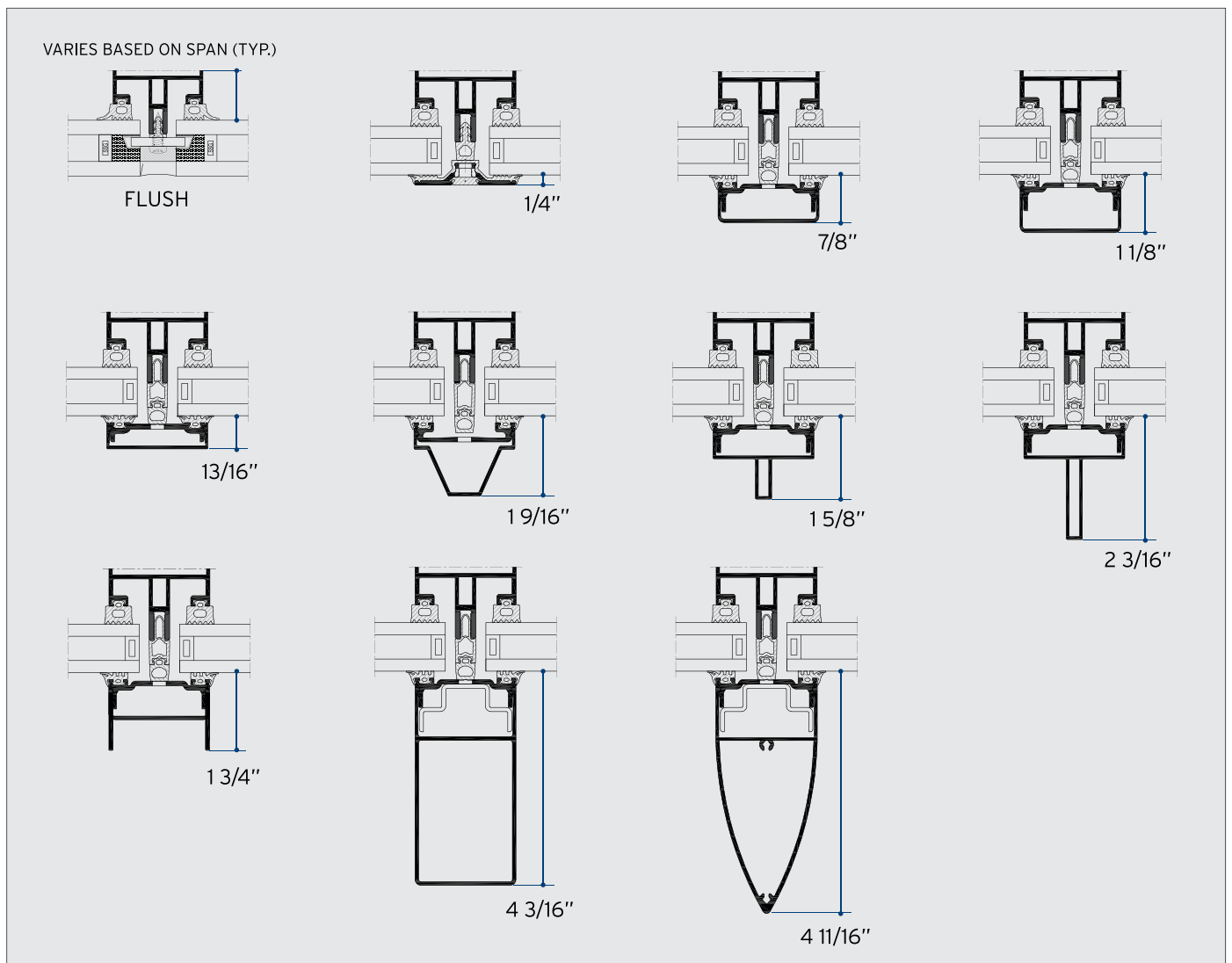
CW 50-SC structural clamped curtain wall is ideal when seeking a continuous flush pane of exterior glass for a sleek look.

A VARIETY OF CAP DESIGN OPTIONS. The CW 50 stands for an extensive range of profiles, gaskets, accessories and tools, specially developed for easy installation. This range of CW 50 profiles meet all the requirements of contemporary architecture, including a large variety of exterior options.

Profile Dimensions		Visible Width (in.)	
		Interior	Exterior
CW 50 Standard	Standard	2	2
CW 50	Slimline	2	2
CW 50-SC	Structurally Clamped	2	3/4" Caulk Joint



POPULAR EXTERIOR CAP DESIGN OPTIONS





TESTERAL

PARTNERS TOGETHER FOR BETTER



REYNAERS
aluminium

Performance Specifications			CW 50		CW 50-SlimLine		CW 50-SC	
Icon	Specification	Glazing	Double	Triple	Double	Triple	Double	Triple
			Thermal Insulation (Btu/hr-ft ² -°F)	Uw	0.23	0.14	0.23	0.14
		SHGC	0.25	0.18	0.25	0.18	0.25	0.18
	Acoustic Performance ASTM E90-09/1332	STC	41		41		39	
		OITC	35		35		34	
	Air Tightness (cfm/ft ⁺)		0.02		0.02		0.04	
	Wind Load Resistance (psf)		90 Structural Overload		90 Structural Overload		90 Structural Overload	
	Water Tightness (Static & Dynamic) (psf)		15		15		15	

All results based on gateway sizes; vary depending on glass/profile combinations | Above Uw & SHGC values do not necessarily work in combination



FOLDING DOORS | PRODUCT SOLUTIONS



FOLDING DOORS have become the ultimate definition of the modern home, opening up over 90% of the interior living space to the adjacent exterior. These doors operate smoothly and effortlessly with a self-supporting frame and bottom roller system. Without lacking flexibility, our folding doors are designed to be the most solid, well engineered components in the market. An optional door locking principle allows the first leaf to be used as an entrance door for simple passage.



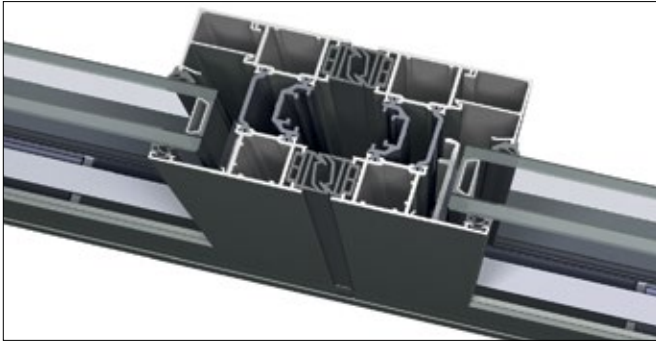
Architect: Gruet Ingenieerie
Photographer: Jean-Marc Pâchard

FEATURES / HIGHLIGHTS

- Bottom Roller System
- Self-Supporting Frame
- Opening configurations up to eight panels
- 4 ft. Wide Panels
- Inward / Outward Opening Configurations
- Single Man-Door for Simple Passage
- Classic (Steel Look) Design Variant

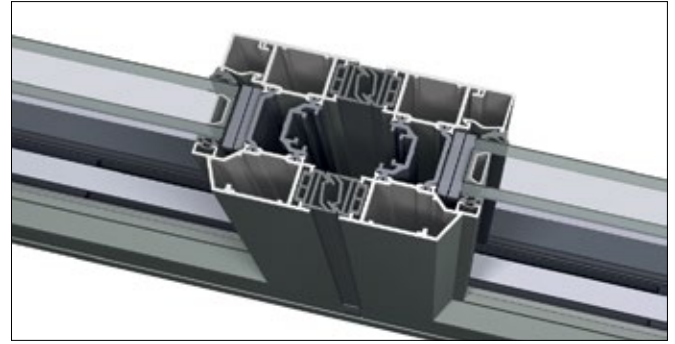
WINDOW & DOOR PRODUCT SOLUTIONS HARMONIOUSLY WORKING TOGETHER FOR MAXIMUM VISUAL APPEAL

CONCEPT FOLDING CF 77



CF 77 Boasts a functional design that matches a large variety of design aesthetics while yielding the largest panes of glass in the industry with a wide range of solutions for inward and outward opening configurations.

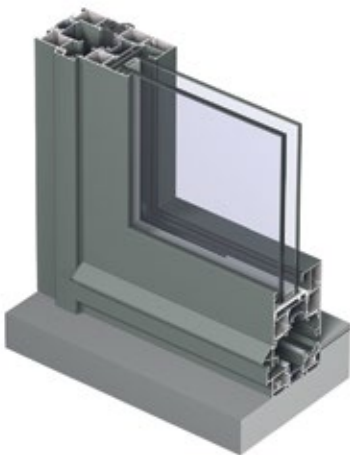
CONCEPT FOLDING CF 77-SL SLIMLINE



CF 77-SL SLIMLINE Featuring a narrower visible width with a classic design for a steel look, the Slimline variant offers the same inward and outward opening capabilities as the functional profile.

OPENING CONFIGURATIONS

2 PANEL	3 PANEL	4 PANEL	5 PANEL	6 PANEL	7 PANEL	8 PANEL
2-0-2	3-0-3	4-0-4	5-0-5	6-0-6	7-0-7	8-0-8
	3-1-2	4-1-3	5-1-4	6-1-5	7-1-6	8-1-7
		4-2-2	5-2-3	6-2-4	7-2-5	8-2-6
				6-3-3	7-3-4	8-3-5
						8-4-4



SINGLE MAN DOOR FOR EASY PASSAGE. With 22 different opening configuration options to choose from, the perfect door is just awaiting your approval. Choose the number of door leaves based on the opening size and decide if you want them to open inward or outward. Assess whether you want them to open all on one side or split with doors panels on each side of the opening. Lastly, an optional door locking principle allows the first leaf to be used as an entrance door without affecting the folding capacity of the system.

Profile Dimensions		System Depth (in.)	Visible Width (in.)		Max. Weight	Vent Max-Min Sizes (in.)				Min. Size (in.) 2 Panel Door		Max. Size (in.) 8 Panel Door	
		Frame-Vent	Frame-Vent	Meeting Section	Vent	Min.		Max.		Min.		Max.	
				Vent-Vent	lbs	W	H	W	H	W	H	W	H
CF 77 Functional Frame	Open In	3	4 11/16	5 11/16	264	16	29	47	116 7/6 120 w/Frame	36	29	380	120
CF 77-SL Slimline Frame	Open In		4 1/4	4 13/16									

FOLDING DOORS | PRODUCT SOLUTIONS

FOUR (4) FT. WIDE DOOR PANELS.

Four (4) ft. wide panels improve sight lines and reduces the number of door sections, with a third less panels within a 12 ft. door opening compared to other solutions in the market.

BOTTOM ROLLER SYSTEM WITH SELF SUPPORTING FRAME. Our Folding door panels are supported by a bottom mounted track system for effortless door operation. With loads distributed among the bottom and top track, CF 77 door panels are the largest in the industry. The reduced loads allow the door frame to be self supporting and does not require any additional engineering for the structural support header of the door opening.



			CF 77 Functional Frame		CF 77-SL Slimline Frame	
			Double	Triple	Double	Triple
Thermal Insulation (Btu/hr-ft ² ·°F)	Open In	Glazing	Double	Triple	Double	Triple
		Uw	0.36	0.28	0.36	0.28
	Open Out	SHGC	0.18	0.14	0.18	0.14
		Uw	0.36	0.28	0.36	0.28
Acoustic Performance ASTM E90-09/1332	STC	N/A		N/A		
	OITC	N/A		N/A		
Air Tightness (cfm/ft ²)			0.1		0.1	
AAMA Rating			PG55 SP		PG55 SP	
Water Tightness (psf)			8		8	

All results based on gateway sizes; vary depending on glass/profile combinations | Above Uw & SHGC values do not necessarily work in combination

POWDER COATING

Choosing aluminum windows and doors for a project is a decision that will nearly endure a lifetime. With endless color and shade possibilities, UV-resistant powder coating provides a durable surface treatment to reduce maintenance. Simple cleaning with some water, a sponge and a neutral, non-scratching soap, will allow the finish to withstand the test of time without having to invest in paint or varnish.

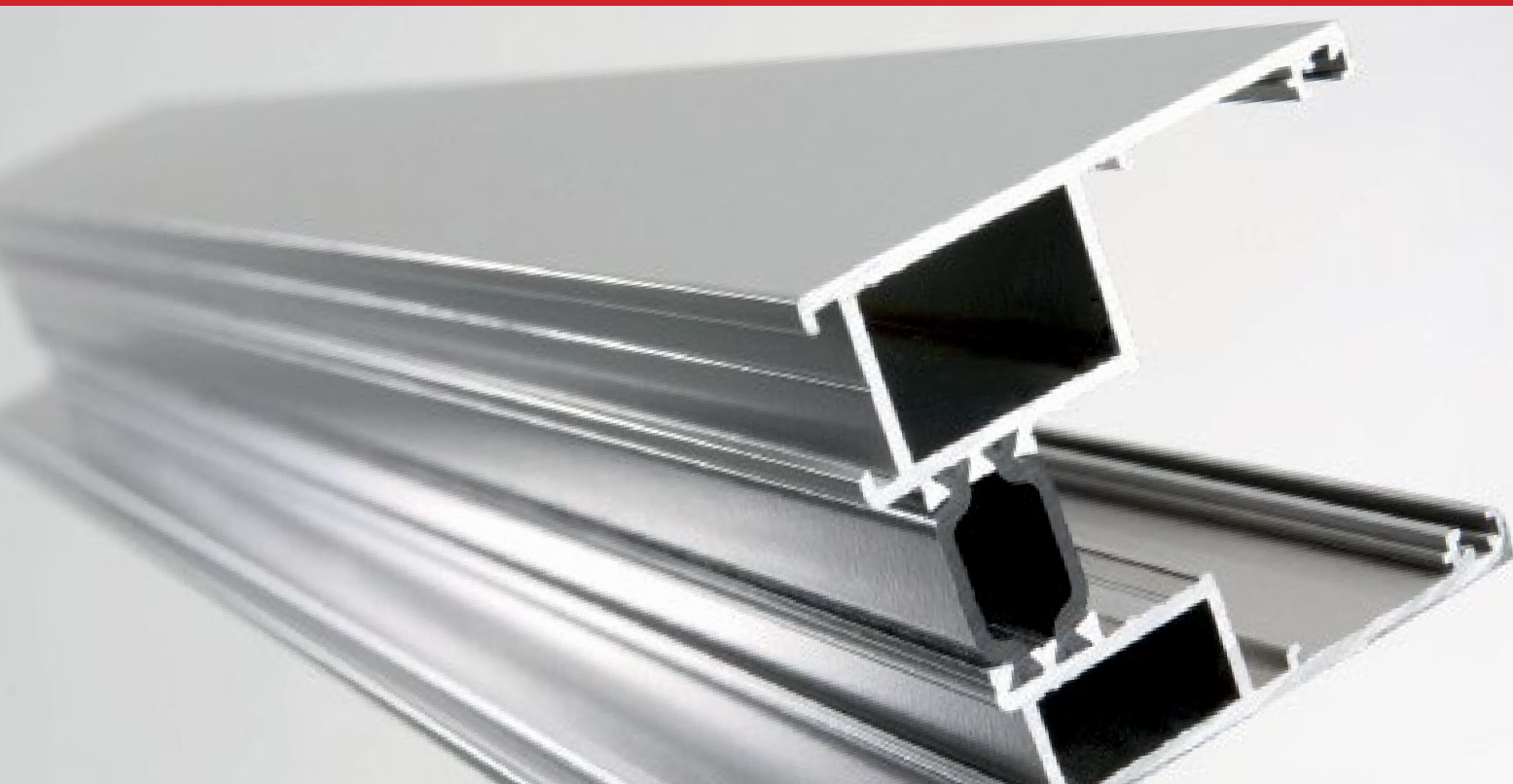
Moreover, powder coating is an environmentally friendly way to paint your windows and doors which excludes the use of VOC's (Volatile Organic Compounds) and requires less energy than many other surface treatments. Similar to anodizing, powder coating is highly resistant against UV radiation and protects against corrosion.

In the first step of the powder coating process, the aluminum is degreased, etched and a protective conversion layer is put on the surface. Next, a negative charge is applied on the powder particles, to attach the powder coating to the grounded aluminum. Finally, profiles are cured in an oven in order to polymerize the powder coating into a stable, high quality, scratch resistant finish.

Reynaers offers the following ranges of AAMA finishes:

- AAMA 2603 (Qualicoat class I) : Available in all RAL colors. See the Reynaers RAL color swatch for details.
- AAMA 2604 (Qualicoat class II) : Available in a wide range of RAL colors, including the standard colors described in this brochure and a series of colors that give an anodized look to your profiles.
- AAMA 2605 (Hyper Durable Colors) : Available in seven standard colors as outlined within this brochure.

AAMA 2603 and AAMA 2604 color ranges can be delivered in either Matte or Fine Textured finish. AAMA 2605 colors are available in standard Matte finish only. All samples in this brochure are in Matte finish.



STANDARD COLORS AAMA 2604

1013	Oyster white	7021	Black grey	8019	Grey brown
3005	Wine red	7022	Umbra grey	9003	Signal white
5010	Gentian blue	7024	Graphite grey	9004	Signal black
5014	Pigeon blue	7030	Stone grey	9005	Jet black
6021	Pale green	7035	Light grey	9006	Metallic alu
7006	Beige grey	7039	Quartz grey	9007	Metallic grey alu
7012	Basalt grey	7040	Window grey	9011	Graphite black
7015	Slate grey	7043	Traffic grey B	9016	Traffic white
7016	Anthracite grey	7047	Telegrey 4		

ANODIZED LOOK COLORS AAMA 2604

Black	Dark Bronze	Nature
-------	-------------	--------

HYPER DURABLE RAL COLORS AAMA 2605

7016	Anthracite grey	9003	Signal white	9006	Metallic alu
7021	Black grey	9005	Jet black	9011	Graphite black
7035	Light grey				

WARRANTY

Subject to the terms of the limited warranty, Reynaers warrants that aluminum parts treated by Reynaers will not have any detachments, flaking, blisters, corrosion, discoloring and/or loss of gloss exceeding predefined tolerances (e.g. AAMA 2603, 2604, 2605).** Limited three (3) year warranty - unless within 3 miles of salt water, then a limited one (1)

Painted & anodized finishes:

year warranty applies.

- If pre-anodization is used, a warranty on corrosion can be extended to a limited ten (10) year warranty.
- This limited warranty covers the cost of labor and material to repaint the affected aluminum areas at the site where the product is located.
- In case of corrosive atmospheres, a prior agreement must have been reached with Reynaers regarding the surface treatment process.

Reynaers Inc. offers a broad selection of standard colors combined with different corrosion protection levels for the selection of the best fit surface treatment for a specific project.



Oyster white
1013
79 1M13-2 | 49 1T13-2*



Basalt grey
7012
79 7M12-2 | 49 7T12-2*



Slate grey
7015
79 7M15-2 | 49 7T15-2*



Anthracite grey
7016
79 7M16-2 | 49 7T16-2*



Black grey
7021
79 7M21-2 | 49 7T21-2*



Umbra grey
7022
79 7M22-2 | 49 7T22-2*



Graphite grey
7024
79 7M24-2 | 49 7T24-2*



Stone grey
7030
79 7M30-2 | 49 7T30-2*



Window grey
7040
79 7M40-2 | 49 7T40-2*



Traffic grey B
7043
79 7M43-2 | 49 7T43-2*



Telegrey 4
7047
79 7M47-2 | 49 7T47-2*



Signal white
9003
79 9M03-2 | 49 9T03-2*



Signal black
9004
79 9M04-2 | 49 9T04-2*



Jet black
9005
79 9M05-2 | 49 9T05-2*



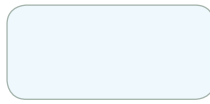
Metallic alu
9006
79 9M06-2 | 49 9T06-2*



Metallic grey alu
9007
79 9M07-2 | 49 9T07-2*



Graphite black
9011
79 9M11-2 | 49 9T11-2*



Traffic white
9016
79 9M16-2 | 49 9T16-2*

ANODIZED LOOK



Black
991 ABLA-2



Wine red
3005
79 3M05-2 | 49 3T05-2*



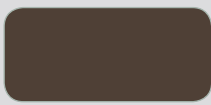
Gentian blue
5010
79 5M10-2 | 49 5T10-2*



Pigeon blue
5014
79 5M14-2 | 49 5T14-2*



Pale green
6021
79 6M21-2 | 49 6T21-2*



Dark Bronze
99T ABWN-2



Beige grey
7006
79 7M06-2 | 49 7T06-2*



Light grey
7035
79 7M35-2 | 49 7T35-2*



Quartz grey
7039
79 7M39-2 | 49 7T39-2*

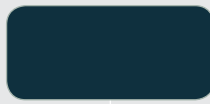


Grey brown
8019
79 8M19-2 | 49 8T19-2*

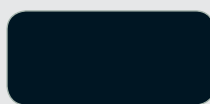


Nature
99T ANAT-2

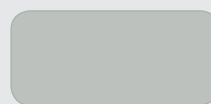
HYPHER DURABLE RAL COLORS



Anthracite grey
7016
79 7m16-3



Black grey
7021
79 7m21-3



Light grey
7035
79 7m35-3



Signal white
9003
79 9m03-3



Jet black
9005
79 9m05-3



Metallic alu
9006
79 9m06-3



Graphite black
9011
79 9m11-3

GENERAL REMARKS

- The color samples in this brochure are just an indication of the final product color/shade, actual product colors/shades may vary slightly.
- If combining different elements with the same RAL color, it is important to verify the details of the powder coating used on all complementary products

** For complete warranty, please see the Reynaers Inc. Limited Warranty



TESTERAL

MANUFACTURER OF ALUMINUM WINDOWS - DOORS - GLASS FACADES

D.O.O. TESTER-AL, Slovenski put bb, 35000 Jagodina, Serbia
Info: +381 35 200 700, Fax +381 35 200 714, e-mail: office@testeral.com

www.testeral.com

